



**ELKCC**

**EASTERN LIONS  
KART CLUB**

The Home of the  
**Junior Sprint Classic**

1005 Seymour-Tooborac Rd,  
Hilldene  
Victoria 3660

## Introduction

Welcome to the Eastern Lions Kart Club (ELKC). This booklet will provide you with basic information about our club and the ELKC racing complex. Contacts, Schedule of Fees and the Camping Area Rules are attached.

## The Club

ELKC is an incorporated Karting club managed and operated by volunteers. ELKC's main aim is to provide its members with first class sprint kart racing facilities which are safe for drivers, pit crew and their families. Its growth and improvement depends on the involvement and commitment of its members. ELKC encourages all members to become more involved in the club – it is more than just a place to race it is a community. Open meetings take a great deal of organising and assistance from the members to ensure they run successfully and profitably. The track and grounds are maintained at working bees. The more people who attend working bees and assist the faster the work is completed which shortens the length of time the track is closed. Every member is expected to attend at least one working bee per year. The Club's growth and the track's improvement is **your responsibility** as a member.

## The Racing Complex

Hume International Raceway is located at 1005 Seymour-Tooborac Road, Hilldene, approximately 8 kilometres from Seymour towards Puckapunyal Army Barracks.



From the Hume Highway take the Seymour/Tooborac Exit (also Puckapunyal Exit), turn west following the Seymour-Tooborac Road towards Hilldene.

Entrance speed to the track is **20km per hour** on the dirt entry road and is **5km per hour** (walking pace) through the pit areas.

Our track is 1064metres long by 8 metres wide and approved for SPRINT kart racing. With a maximum of 40 karts on the circuit, the circuit is licensed to run in either a **CLOCKWISE** or **ANTI CLOCKWISE** direction through a mixture of open - fast and tight - slow sections. The circuit offers many challenges for the driver and thrilling viewing for the spectator.

**The track direction applicable at the time is indicated by the sign attached to the out-grid gate and the karts must travel in the direction indicated.**



### Track Access and Guidelines

The racing complex is available to members most days between 9 am to 5 pm. **Wednesdays, ANZAC Day, Mother's Day, Christmas Day and New Year's Day** are classified as Noise Free days and no practice is available on these days as per Council Permit. Karters breaching the Council Regulations may be fined for breach of contract and/or their club membership may be withdrawn.

To use the ELKC Racing Complex you must be a financial member of ELKC, hold a current Karting Australia/CAMS licence and observe the ELKC rules and regulations. Your kart and safety equipment must comply with relevant rules stated in the current Karting Australia Manual ("KA Manual") which can be found at: <https://www.karting.net.au/administration/rules>. A person who holds a Karting Activity Controller's Licence (KAC) or a Senior Race Official's Licence of any Grade (4, 3, 2, or 1) must be always present during any recreational social karting activity.

## WARNING - GO KARTING IS DANGEROUS!

It is a condition of entry to the circuit that all spectators, drivers and pit crew acknowledge that motor racing is dangerous and agree to accept as a condition of entry that the Eastern Lions Kart Club, Karting Australia, Karting Victoria nor the members of the Club, nor their respective servants, officials, representatives or agents will be under any liability whatsoever for any death or bodily injury, loss or damage which may be sustained or incurred as a result of their participation in the race meeting or event, howsoever such death or bodily injury, loss or damage is caused, whether by negligence or otherwise. Spectators, drivers and pit crew must also understand and accept that entry to the circuit and surrounds constitute an agreement with the Organisers to take part in this competition.

All participants are also reminded that fuels, oil, lubricants and coolants are highly specialised substances. Apart from the ever-present risk of fire, participants must be aware that these agents may contain substances that are extremely dangerous to one's health if misused, inhaled or allowed into contact with human skin. Some of the components of these fuels, oils and lubricants are suspected of having the potential to cause cancer in rare instances. The use of petrol as a general cleaning and washing agent is a common misuse of a potentially dangerous substance and is prohibited.

## Race and Practice

ELKC approves use of the racing complex for the following purposes:

Event	Users
<b>Open Race Meetings</b> Conducted upon notification in accordance with AUSTRALIAN KARTING rules and any documented Supplementary Regulations.	Open to entrants holding a current Karting Australian Licence.
<b>Club Day Race Meetings</b> Conducted in accordance with Karting Australia rules and any documented Supplementary Regulations in accordance with the KV Race Calendar.	Open to entrants who are members of Eastern Lions Kart Club or as a visitor to the club holding a current Karting Australian Licence.
<b>Organised Social Karting Activity / Recreational Social Karting Activity</b> Conducted during track open hours except race days.	Open to ELKC members and invited guests holding a current Karting Australian Licence. A person who holds a Karting Activity Controller's Licence (Grade 5) or a Senior Race Official's Licence of any Grade (4, 3, 2, or 1) must be present.

## Club Day Race Meeting Timetable

Club Day race meetings must be run to a tight schedule to fit all races into the day. Most events will be run according to the following schedule:

Day	Session	Time
Saturday (prior to club day)	Organised Social Karting Activity	9am to 4pm
Sunday (Club Day)	Gates Open Canteen Open Drivers Briefing Qualifying/Practice Racing Presentations	6:00am 7:00am 7:30am 8.00am (Format – Refer Supp Regs) Commences after Practice or Qualifying At completion of Racing

## Race Entries

Entries are made and paid for by credit card online via the KOMP portal ([portal.karting.net.au](http://portal.karting.net.au)).

## Scrutineering Forms

Karts must always comply to the Scrutineering and Kart Formula requirements, as outlined in the current KA Manual. All Safety equipment/rules must be adhered to (Refer Karting Australia Manual)

All competitors are required to complete an electronic Scrutineering Form at the time of entering a race meeting on the KOMP portal.

Your kart racing number must be clearly displayed in accordance with the kart formula in the current KA Manual.

## Transponders

Each Competitor must have a functioning MYLAPS compatible timing transponder fitted to their kart for the purpose of timing during each completion race. Each Competitor is responsible for the correct fitting, maintenance and operation of their transponder.

## Supplementary Regulations

Supplementary Regulations are available for viewing on the Karting Victoria website - <https://www.kartingvic.net.au/supp-regs/>.

## Club Championship Trophies/Awards

Club day results determines the overall Club Championship Points at the end of the year. As of the 1st of January 2024, to be eligible for ELKC Club Championship you will need to be a 'financial member' of ELKC – but not a home club – 'financial member'.

If you join after the start of the Club Day in February 2024, the club days that you have completed prior to becoming a 'financial member' will be classed as a DNS plus 2 for each race you have competed in. For example – if you complete three club days and become a financial member of ELKC in May 2024, your points prior to May Club Day will be DNS plus 2 for each race you have competed in.

To be eligible for ANY perpetual trophies/points i'e., Best & Fairest, Best 1<sup>st</sup> Year Driver, Bongiorno Memorial Award, Presidents Award and Life Member etc, then your membership must be a 'financial home club member' and your home club licence must be with ELKC.

Trophies and Awards are presented at the End of Year Presentation Dinner.

- Club Day Classes P1, P2 & P3
- Best & Fairest Awards for Cadets, Junior & Seniors
- Best 1<sup>st</sup> Year Driver Award for Juniors & Seniors
- Bongiorno Memorial Award
- President's Award

The Champion of Champions Race consists of one heat held during the last Club Day event of the year for Cadets, Juniors & Seniors. 1<sup>st</sup> place trophies are awarded on the day. **4SS Champions of Champions race will be run as a separate race. One 1st place trophy will be awarded to the winner.**

## Track Access and Guidelines

Keys can only be issued to those holding a current Karting Activity Controller Licence (KAC) or a Senior Race Official's Licence of any Grade. New members may be required to complete an induction day prior to obtaining a key. Please give us a call if you would like more information about obtaining an official licence.

***The Front Entry Gate must remain locked during private practice session.***

Lost or damaged keys must be reported immediately to the membership secretary and a \$20 fee is payable for a replacement.

Locks are changed annually, and keys issued on an exchange basis. A \$20 charge applies for your first key or those who have not returned their last issued key.

**Persons loaning keys to non-ELKC members will have their keys revoked and they will not be re-issued**

## Respect Karting and our Club

It is important to our sport that we treat our entire community with RESPECT.

### What does this mean for you?

It means you should treat others the same way you like to be treated – with kindness, honesty, sportsmanship, and fairness. We expect all members of our community to communicate in a quiet and calm manner. This may be difficult at times (especially in the heat of a race situation), but it should be noted that we will **NOT** tolerate any form of abuse towards our officials, drivers, parents, club volunteers or spectators.

All our members should abide by the Karting Pledge:





This also means if you witness, or experience behaviour you feel makes you uncomfortable or seems to go against our pledge of respect then we want to know about it. Please report any issues to any of our Club Committee.

Common courtesy must be adhered to at all times. Bad language or abuse to members or officials at any time will not be tolerated.

Any member or guest of any member caught vandalising or misusing the facility in anyway, could have their membership withdrawn or suspended without further notice.

Any member found guilty of physical violence towards another member, official, or any other person at the Eastern Lions Kart Club facilities will be suspended from the club for a minimum period of three (3) months.

Common sense and courteous behavior makes karting more enjoyable for all. Please observe the following guidelines:

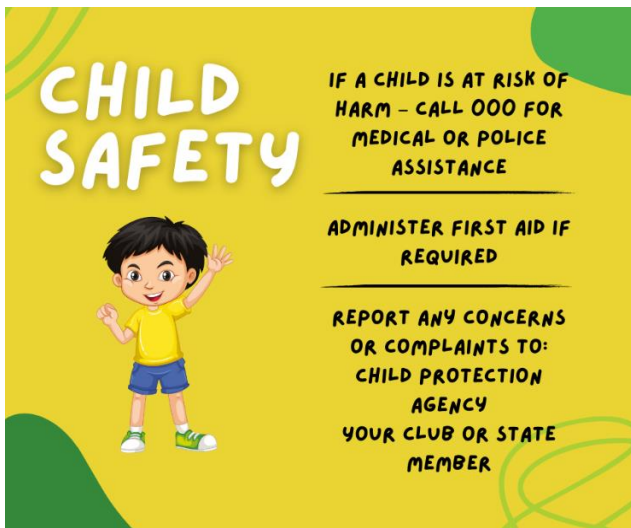
- Always observe the track operating hours.
- Drive slowly on the private access road – maximum of 10kph (reduce dust hazard).
- Observe a 5kph speed limit (cars and motorcycles) in the pit area.
- Last person(s) with keys using the circuit must lock the Out and In grid gates and front gate.
- Cyber Bullying, harassment and discrimination – please refer to KA Cyber Bullying Policy. <https://www.karting.net.au/wp-content/uploads/2019/11/P9-Anti-Discrimination-Harassment-and-Bullying.pdf>

### **Child Safety**

Our club has a zero-tolerance policy around child abuse and neglect in any form. We are committed to keeping children safe on and off the track. So, we need your help to do this!

**Please be aware that any children accessing any of our club facilities must always be supervised by an adult.**

As a valued member of our karting community, you play a crucial role in protecting children in our sport. Legally you **MUST** know what you should do if you come across, suspect, or basically feel uncomfortable with a situation a child may be in or may potentially become involved in. This includes:



A more detailed policy in dealing with children can be found on the [KA website](https://www.karting.net.au/wp-content/uploads/2022/10/P3-KA-CHILD-SAFEGUARDING-POLICY.pdf) at:

<https://www.karting.net.au/wp-content/uploads/2022/10/P3-KA-CHILD-SAFEGUARDING-POLICY.pdf>

OR you can contact our club Member Protection Information Officer/Child Safety Contact at: [elkcmpio@gmail.com](mailto:elkcmpio@gmail.com).

Finally, because we want our club to be child safe, we would like you to read through the safe and unsafe behaviours in karting with your child/ren, which can be found at the end of these Rules and Regulations.

### Working With Children Checks

To be a volunteer within our sport, or any sport, you MUST have a Working with Children Check approved, in your State or Territory, if you are likely to come into contact with children. The good news is, as a volunteer it is FREE to apply.

In most cases we need you to get this card before you start volunteering, so it's a great idea to get in early and then let us know your card details when you receive it. Information about how to apply for a Working with Children Check can be found at:

<https://www.workingwithchildren.vic.gov.au/individuals/applicants/how-to-apply-1>.

Don't forget to let us know you are interested in assisting us, even before you get your card. We want to make volunteering as easy as possible for you, so this way we can start getting you ready with any information that can help you upskill or transition into a volunteering role for our club.

ELKC is required to maintain a record of the Working with Children Checks for all of our volunteers. These will be stored securely and will be required to be updated as and when they are renewed.

### Track Courtesy

Racing and practicing can be dangerous. Behave in a courteous manner to all track users and avoid potentially hazardous situations. The following are common sense guidelines for specific situations:

Situation	Action
Your Kart stops	Remove it well off the circuit and clear of any run-off areas, move to the inside of the circuit if possible.
You Spin	Remain in the kart with an arm raised above your head. When safe, exit the kart and remove it from the circuit.
You are being passed	Maintain a steady line. You may indicate, by pointing, a preferred passing side.

### ALSO:

- DO NOT use cut throughs.
- DO NOT shunt other karts.
- DO NOT lock wheels.
- Exit the circuit in a slow and predictable manner with your arm raised above your head.

## In & Out Grids

Use the grid facilities as follows:

Facility	Usage
Out Grid	For getting your kart on the circuit. Ensure you enter the track into a no or low traffic situation
In Grid	For getting your kart off the circuit. Raise your arm and move to the outside of the track, enter at a slow speed. During a race meeting drivers' must remain seated in the normal driving position in their Kart upon entering the In Grid at the completion of a session until a direction to exit their Kart is given by an Official. A Driver who leaves their seat before the instruction to exit their kart is given may receive a penalty.

**Karts must return via the in grid NOT the out grid.**

**No re-fueling or oiling of chains on the track or in the grid areas. This will not be tolerated under any circumstances.**

## Pits

ELKC provides an illuminated, flat and cleared pit facility. Please use the bins provided and note that: BBQ's, open fires, smoking, vaping, consumption of alcohol and illegal drugs are NOT permitted in the pit grounds. Motorised vehicles, including cars and motorcycles are to observe a 5kph (walking pace) speed limit. Push bikes and scooters are not allowed in the pit area during racing or practice times, nor are they permitted to be used on the deck around the clubrooms at any time.

A notice board is erected between the Out Grid and the pit facilities. Important club messages to members will be posted on the notice board. General Club information can also be found on the TV in the Club rooms.

## Temporary Structures at events

Temporary structures must be positioned in accordance with Organisers requirements; Adequately secured using solid weights or stakes/pegs that comply with manufacturers instructions or Hire and Rental Industry Association – Temporary Structure/Marquee Weighing Guide/standards.

## Running in an engine

When a Competitor Licence Holder is 'running in' an engine during practice they must display a diagonal red cross over their Race number on the rear number plate. This cross must go from corner to corner of the number plate and be clearly visible.

## Organised Social Karting Activity

All Social Karting activities **must** be supervised by a Grade 5 or higher Licence holder and they must complete the online Social Karting Activity Officials Form prior to commencing.

All drivers or guardians **must** complete and submit a Social Recreational Karting Activity Form (the "SKA Form") prior to the Driver entering the track at a Karting Activity Session wherein they must: **1)** Certify that the kart has been checked for safety compliance and that it is safe for use. **2)** Confirm their acceptance of the "Exclusion of Liability, Indemnity, Release and Voluntary Assumption of Risk by entering the Circuit" and participating in the recreational activities conducted at the venue. **3)** Certify that they have a current KA Licence relevant for the class of Kart that intend to drive. **4)** Production of the confirmation of submission email that the Driver or their guardian will receive following successful submission of the SKA Form will serve to satisfy the requirements of this regulation.

**The Front Entry gate must remain locked during recreational activities.**



### **Karting Activity Controller (KAC)**

Means a person who holds a Karting Activity Controller's Licence (Level 5) or a Senior Race Official's Licence of any Level (4, 3, 2, or 1) issued by KA and whose name has been advised to Karting Victoria in accordance with article 2 c) of Appendix 1 to the National Competition Rules and who is in control of a Karting Activity in accordance with those Rules.

### **Practice Time Clock**

Practice time on the track is conducted to the following schedule:

<b>Drivers</b>	<b>Plate Colour</b>	<b>Time</b>
Cadets	White plate w/ red number	First 10 minutes
Juniors	White plate w/ black number	Second 10 minutes
Seniors	Yellow plate w/ black number	Third 10 minutes

**AT NO TIME ARE ANY SENIORS ALLOWED ON THE TRACK WITH JUNIORS, NOR ARE JUNIORS ALLOWED WITH CADETS**

### **“P” Plate Use**

Drivers of a “D” or “E Practice” licence must display a “P” plate in a location adjacent to their competition number at all times whilst they are on a Track. The “P” plate must resemble a “P” plate as used by the State or Territory civil roads authority. A “P” plate must be used until such time as a driver has qualified to be upgraded to the next level of licence.

**Underage, unlicensed and using engines that are not eligible, or with restrictors removed is strictly forbidden.**

This is **NOT** permitted at any time as it contravenes AUSTRALIAN KARTING regulations and insurance. Please refer to the rules in the Australia Karting Manual.

It is forbidden to cross the Track or sit on tyre walls while there are karts driving on the Track. Any person who is permitted inside the Track must wear a high visibility vest and must remain behind protective barriers at all times while karts are on the track.

### **Protective Clothing**

General requirements applicable to drivers at all times whilst engaging in the act of operating a Kart and as set out in the AUSTRALIAN KARTING Manual.

- **Helmet** – Must be of full-face type and not exceed 10 years from manufacture date.
- **Driving Suit** – Must be a one-piece protective item of clothing. Must be adequately secured at the neck, wrists, and ankles.
- **Gloves** – Must be securely fastened at the wrist. Must provide full finger protect. Must be resistant to abrasion.
- **Footwear** – Must be securely fastened. Must cover and provide protection to the ankles. Must be resistant to abrasion.

Long hair must be securely retained.

All safety equipment should meet the standards set in the current KA Manual.

## Licences Categories

### Cadet 9

- a) From age 6
- b) A Driver must be a minimum of 7 Years old to Compete
- c) Maximum Age: Date of 10th birthday
- d) A Driver between the age of 6 and 7 years is permitted to practice at Club level only

### Cadet 12

- a) Minimum Age: Year of 9th birthday
- b) Maximum Age: Date of 13th birthday

### Junior

- a) Minimum Age: Year of 12th birthday
- b) Maximum Age: Date of 16th birthday

### Senior

- C, B and A Grade - From the date of a person's fourteenth (14th) birthday and over.
- E and D Grade - From the date of a person's fifteenth (15th) birthday and over.

**Note:** All Cadet and Junior D grade drivers must have at least 2 D to C grade endorsements before entering a Zonal, State Series, State Cup or State Trophy event.

**E Practice** - 6 years of age and up. Issued for social and recreational karting only. Drivers aged 7 years or older can compete in one club day race meeting per year.

**Participants Licence** - for parents/guardians of children under the age of 18 yrs are required to obtain a Participants Licence via KOMP.

### Cadet Licence - Additional Safety Training requirements for first time licence applicants

A Cadet aged Driver must be registered for and participate in at least eight (8) Karting Activities of no less than 1 hour duration on a KA licenced track prior to undertaking an ODS. During the registration process for a Karting Activity, a Cadet Log Certification is to be requested in KOMP.

At all times while the Driver is participating in the required Karting Activity, they must be supervised by either:

- a) A Parent who is the holder of a Participants License; or
- b) A person who is 18 years of age or older who is the holder of a racing licence issued by or recognised by KA; or
- c) A driving instructor/coach who is recognised by KA.

### Karting Activity Controller (KAC) Licence / Officials Licence

To register for a KAC Licence, email KA with your request at [officialsacademy@karting.net.au](mailto:officialsacademy@karting.net.au). KA will send you a link and login code to complete the online core units, you must also apply for a Working With Children's Check in your state. Once you have completed the core units and have your WWC, register via "Applications" in your KOMP portal.

### Licence Certifications (Endorsements)

Licence certifications may be requested via KOMP at the time of entering a race meeting. A Certification will only be granted if the driver has satisfactorily completed 75% of the event and has not received a penalty or infringement notice during the event. Once the upgrade conditions have been met, the Participant/Driver may apply via KOMP, to the SKA for a licence upgrade. Please note Certifications and licence upgrades are not done automatically.

### Parking

Visitors can park at various vantage points around the perimeter of the track. Cars are not to be parked in the pit area. Please ensure your vehicle does not create an obstruction to other vehicles.

## Drinking

The Member acknowledges that the club owns a breath analyser and at any time whatsoever the Stewards/Committee reserve the right at their sole discretion to test one or more competitors and/or pit crew. The consumption of alcohol by any Licence Holder, Member, Pit Crew or Official in the Paddock, or any section of a Competition venue under the control of the Officials of the Race Meeting is strictly forbidden until all practice and/or Competition has concluded for each day of an Event or Meeting (as per 2024 KA Manual). Underage drinking is illegal and will not be tolerated. ELKC is governed by Responsible Serving of Alcohol (RSA).

## No Underage Driving

No driving of a motor vehicle is permitted within the premises of ELKC without a valid Driver's Licence. Learners must be accompanied by a fully licensed driver.

## Camping

The ELKC Racing Complex features a family camping area. Members and guests agree to abide by the Camping Area Rules upon registering for a camping spot. Permanent camping will be charged an annual rate and caravans that appear abandoned will be removed from the camping area at the club discretion. Abandoned caravans will be required to be removed from the premises and a much higher rate (storage fee) will be charged until such a time it is removed. ***Permanent camping is strictly for financial members who race at ELKC regularly throughout the year.***

## Hygiene

Toilets and showers are provided in the designated male and female amenities.

Please keep amenities tidy and clean and report any faults to the ELKC Track and Grounds Committee. Rubbish bins are provided in and around the pit area as well as the clubrooms, viewing areas and camping grounds. It would be appreciated if you could assist in emptying the bins into the dump masters. These provisions must be utilised or fines may be imposed.

***There is to be no taking of videos or photos in the bathrooms and toilets – cameras are strictly forbidden to be used in these areas.***

## Canteen and Viewing Areas

ELKC features excellent clubroom facilities with a magnificent, sheltered viewing area overlooking the track. The clubrooms incorporate a canteen which supplies a variety of hot and cold foods. The canteen is open on race weekends:

- Saturday – 11am to 9pm. Meals available most Saturday nights (dinner bookings are essential at the canteen)
- Sunday - 7:00am to finish.

The complex features excellent open viewing areas and a children's under 12 playground is provided for your child's enjoyment. Please make sure an adult is supervising your child when always using the playground.

## Correspondence

All correspondence must be in writing through The Secretary. Contact details are listed at the end of these Rules and Regulations.

## Animals

Animals must be restrained and owners are responsible for cleaning up waste from their animals. Strictly no animals permitted in the canteen/clubrooms.



**GENERAL MEETINGS ARE HELD ON A REGULAR BASIS AND ALL MEMBERS ARE WELCOME TO ATTEND.**

**THIS IS THE TIME TO DECIDE ON THE WAY YOUR CLUB IS RUN!**

Meetings are usually held on the 1<sup>st</sup> Wednesday of each month at 7:30 pm at the Greensborough RSL Club, 111 Main Street, Greensborough. Dates and times subject to change and will be listed on Facebook and TeamApp.



Join us on Team App to keep informed on the latest news, important dates, and events. We welcome all members to attend at least one working bee a year. This is a great way to meet other members and get more involved in your club.

## 2024 CLUB SPONSORS



## Class Weights

Class	Engine	Max Kart Weight	Total Weight
Cadet 9	Vortex Mini Rok		<b>100kg</b>
Cadet 12	Vortex Mini Rok		<b>110kg</b>
KA3 Junior Light KA3 Junior Heavy KA3 Junior Championship	IAME KA 100	Heavy 97kg	<b>132kg</b> <b>150kg</b> <b>137kg</b>
KA3 Senior Light KA3 Senior Medium KA3 Senior Heavy KA3 Senior Championship	IAME KA 100	Med & Heavy 97kg	<b>150kg</b> <b>170kg</b> <b>190kg</b> <b>160kg</b>
4SS Senior Light 4SS Senior Med 4SS Senior Heavy	Torini Clubmaxx		<b>140kg</b> <b>155kg</b> <b>170kg</b>
TAG 125 Restricted - Light TAG 125 Restricted - Medium TAG 125 Restricted - Heavy	<ul style="list-style-type: none"> <li>Rotax</li> <li>Iame</li> <li>Vortex Rok GP</li> <li>Other</li> </ul>	Med & Heavy 102kg	<b>160kg</b> <b>180kg</b> <b>200kg</b>
Vic Comb Masters	a. IAME KA100 b. All Other		<b>a. 168kg</b> <b>b. 175kg</b>
TAG 125 Light TAG 125 Heavy TAG 125 Championship	<ul style="list-style-type: none"> <li>IAME X30</li> <li>Rotax</li> <li>PRD Galaxy</li> <li>Vortex Rok GP</li> </ul>	Heavy 102kg	<b>160kg</b> <b>180kg</b> <b>172kg</b>
X30 Light X30 Heavy		Heavy 102kg	<b>162kg</b> <b>176kg</b>

Refer to the Australian Karting manual for full listing of class weights.



## ELKC CONTACTS

Contact	Name	Email	Phone
President	Steve Pegg	elkcpresident@gmail.com	0438 570 755
Vice President	Justin Paragreen	elkcvicepresident@gmail.com	0434 312 758
Secretary	Gail Cherry	elkcsecretary@gmail.com	0411 218 208
Treasurer	Warren Johns	elkctreasurer@gmail.com	0409 518 275
Membership Secretary	Cherie Paragreen	elkcmembersecretary@gmail.com	0409 655 207
Race Entry Secretary	Don Rossell	elkcraceentry@gmail.com	0408 297 112
VK Delegates	Justin Paragreen Steve Taylor	elkcvkadelegates@gmail.com	0434 312 758 0448 197 555
Track Safety Officer	Michael O'Brien		
Club Safety Officer	Steve Taylor		0448 197 555
Track & Grounds	Michael Jenkins, Steve Pegg, Steve Taylor, Justin & Jaylen Paragreen, Ross Harrod, Kurt Meyer, Jason Lee, Andrew Humphrey	elkcctrack@gmail.com	
Race Committee	Justin Paragreen, Sarge Wilson, Steve Taylor, Lisa Jones, Jason Lee, David Thomson, Mark Covalea, Danny Lord, Ian Branson	elkcracecommittee@gmail.com	
Race Administration	Ross Harrod, Lorraine Cubbins Don Rossell, Sarge Wilson, Lisa Jones		
Trophies	Michele Pegg	elkctrophies@gmail.com	0407 331 476
Member Protection Info Officer / Child Safety Contact	Jo Jenkins	elkcmpio@gmail.com	
Social Media	Michele Pegg, Cherie Paragreen		
Website	Braden Clark	elkcwebsite@gmail.com	
Marketing & Promotions	Warren Johns, Cherie Paragreen, Michele Pegg, Jo Jenkins, Trish Lord, Michelle Riddell, Don Rossell, Gail Cherry	elkcmarketing@gmail.com	
Catering	David Thomson, Stuart Drysdale, Michael & Julie O'Brien, Frank Kessels, Justin & Jaylen Paragreen, Jo & Michael Jenkins, Michelle Riddell, Paul & Josh King, Ross Harrod, Michele Pegg	elkccanteen@gmail.com	

# FEES FOR 2024

## Club Membership Fees for 2024

Type	Fee	Description
1. <b>FAMILY</b>	\$280.00	2 Adults & any number of children residing at the same address.
2. <b>SENIOR</b>	\$240.00	Single membership (Holds a Senior Licence)
3. <b>JUNIOR</b>	\$175.00	Single membership (Holds a Cadet or Junior Licence)
4. <b>VINTAGE</b>	\$150.00	Vintage Kart Licence Holders only
5. <b>SOCIAL</b>	\$110.00	Any age, Non karting licence holder (cannot drive a go kart)

## Other Fees & Charges

Type	Fee
1. <b>TRACK GATE KEY</b>	\$20.00
2. <b>CLUB RACE ENTRY FEE</b>	\$65.00
3. <b>SECOND CLASS ENTRY FEE</b>	\$55.00
4. <b>CAMPING FEES</b>	\$250.00/yr unpowered site \$300.00/yr powered site

## Karting Victoria Licences

Type	Fee
1. <b>COMPETITION LICENCE (NEW)</b>	\$400.00
2. <b>COMPETITION LICENCE (RENEWAL)</b>	\$385.00
3. <b>E GRADE (RECREATIONAL) LICENCE</b>	\$175.00
4. <b>8 DAY LICENCE</b>	\$100.00
4. <b>VINTAGE LICENCE</b>	\$110.00
5. <b>KARTING ACTIVITY CONTROLLER (KAC) LICENCE</b>	\$25.00

# Safe Behaviours

## Safe and Unsafe Behaviours in Karting

### What Can I Expect of Adults at Karting?

You should always feel safe and welcome when you are at a karting club, event, or practice. We want you to be safe, feel safe and drive safe.

All adults are expected to help make this happen by making sure their behaviour is safe and appropriate and makes you feel like you want to keep coming back to karting and your club.

To help you understand what good and bad behaviours look like, so you can tell someone if you need to, there is a list below to give you a guide. Remember if it makes you feel uncomfortable tell a trusted adult in your club.

### Safe Behaviours

**Contact:** Physical touch is not usually needed in karting. If it happens it should be in front of other people and WITH your consent, such as a pat on your back or high five to celebrate a good drive.

**Communication:** Guidance on your driving that is positive, helpful, and not based on you as a person.

Adults should be calm and kind and use words you easily understand.

Online communication should always include your parents or guardian.

**Boundaries:** When an adult has safe, good boundaries it means they:

- make sure you understand their role
- act friendly, but not a friend
- treat everyone the same
- follow the rules with taking photos of you
- always behave appropriately around you and other young people that they are in contact with

### Unsafe Behaviours

**Contact:** Any touch you do not consent to, or makes you feel uncomfortable.

Any touch that, seems sexual, involves your private parts, or embarrasses you.

Any touch that happens in a private place like a trailer or a car.

**Communication:** Any language or communication that makes you feel unsafe, worried, scared, or embarrassed.

Any comment online or in person that is sexual or private.

Any contact outside of karting activities (like late at night), via private chat, platforms (like socials or texting), is excessive or is about personal stuff and nothing to do with karting.

**Boundaries:** When an adult has unsafe, or poor boundaries it means they:

- favour or single you out
- accept or give gifts to you or your family
- contact you outside of karting activities, including through social media



BE SAFE - FEEL SAFE - DRIVE SAFE



# Safe Behaviours

## Safe and Unsafe Behaviours in Karting

### Safe Behaviours

**Supervision:** Adults who are responsible for supervising you in karting should:

- always know where you are always
- give you privacy to use the bathroom, but make sure you are safe
- wait with you at the club in an open space if there is not a responsible parent or adult around or if they are doing another job at the club

**Environment:** A safe environment for children at karting is:

- having a space where children from different backgrounds can be comfortable while they are there
- bathrooms appropriate for everyone
- online spaces where communication is open, and includes a parent or guardian



### Unsafe Behaviours

**Supervision:** Adults who are responsible for supervising you in karting should not:

- be distracted by their phones or other people
- let young children use a bathroom without making sure there is no risk first
- leave you alone, if a responsible parent or adult is not around or doing another job in the club

**Environment:** An unsafe environment for children at karting is:

- a place where children who have disabilities can not get around easily.
- where children from different backgrounds feel left out
- bathrooms where there is no privacy
- events or activities where you are punished, humiliated, or made to feel uncomfortable
- online spaces where communication is one to one, and used to show inappropriate material not related to karting

### Say Something

If you have worries about your safety or the safety of someone else at karting, or have heard or seen something that makes you feel uncomfortable... it is important you say something.

Speak to a parent, carer, family member or trusted adult like a club member, another driver or official.

Write down your worries and give them to someone at your club driver or official.

**REMEMBER WE WANT ALL CHILDREN TO BE SAFE, FEEL SAFE, DRIVE SAFE**

For any safeguarding children contact your club or email [integrityunit@karting.net.au](mailto:integrityunit@karting.net.au)  
 Contact Kids Helpline on **1800 55 1800** (it's free) or [www.kidshelpline.com.au](http://www.kidshelpline.com.au)  
 If anyone is in immediate danger contact the Police on 000



**BE SAFE - FEEL SAFE - DRIVE SAFE**